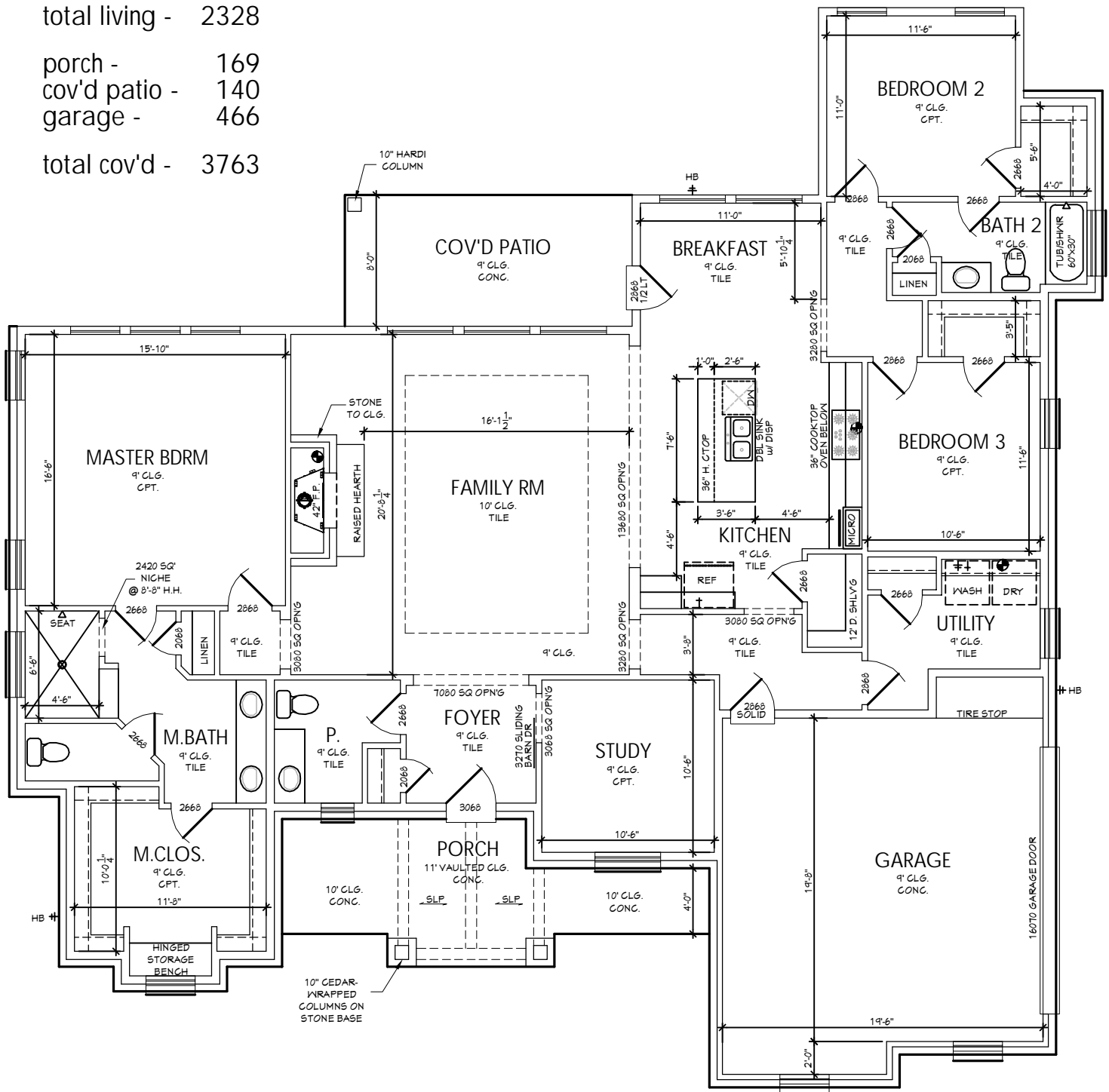


# KURK★HOMES

Custom Builders

total living - 2328  
 porch - 169  
 cov'd patio - 140  
 garage - 466  
 total cov'd - 3763



depth - 65'-9"  
 width - 66'-6"

## Deer Run

4 MAY 2017

Plans, specifications, community amenities, standard features, availability and prices are subject to change without notice. Calculations for square footage are approximate.

# KURK★HOMES

Custom Builders



FRONT ELEVATION  
OPTION 1



FRONT ELEVATION  
OPTION 2

## Deer Run

4 MAY 2017

Plans, specifications, community amenities, standard features, availability and prices are subject to change without notice. Calculations for square footage are approximate.